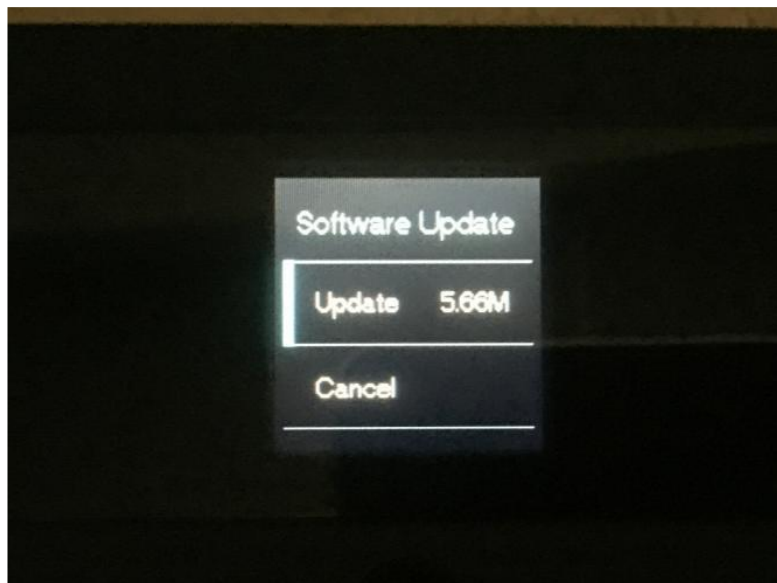


How do I upgrade the firmware of my LTE MiFi?

Suitable for: LTE MiFi

There are two methods to upgrade your LTE MiFi's firmware, please follow either one of them to upgrade your M7350.

Note: If this is your MiFi first boot in a week and your MiFi's firmware version is not latest, there will be a firmware update message in the MiFi's screen. (MiFi will automatically detect whether there is a latest firmware version in the cloud server every week)



Method 1: Local upgrading

Step 1

First please download the latest firmware of MiFi from our website.

Note: The firmware is a zipped file. Please don't unzip it. You will need the whole zipped file to upgrade your MiFi.

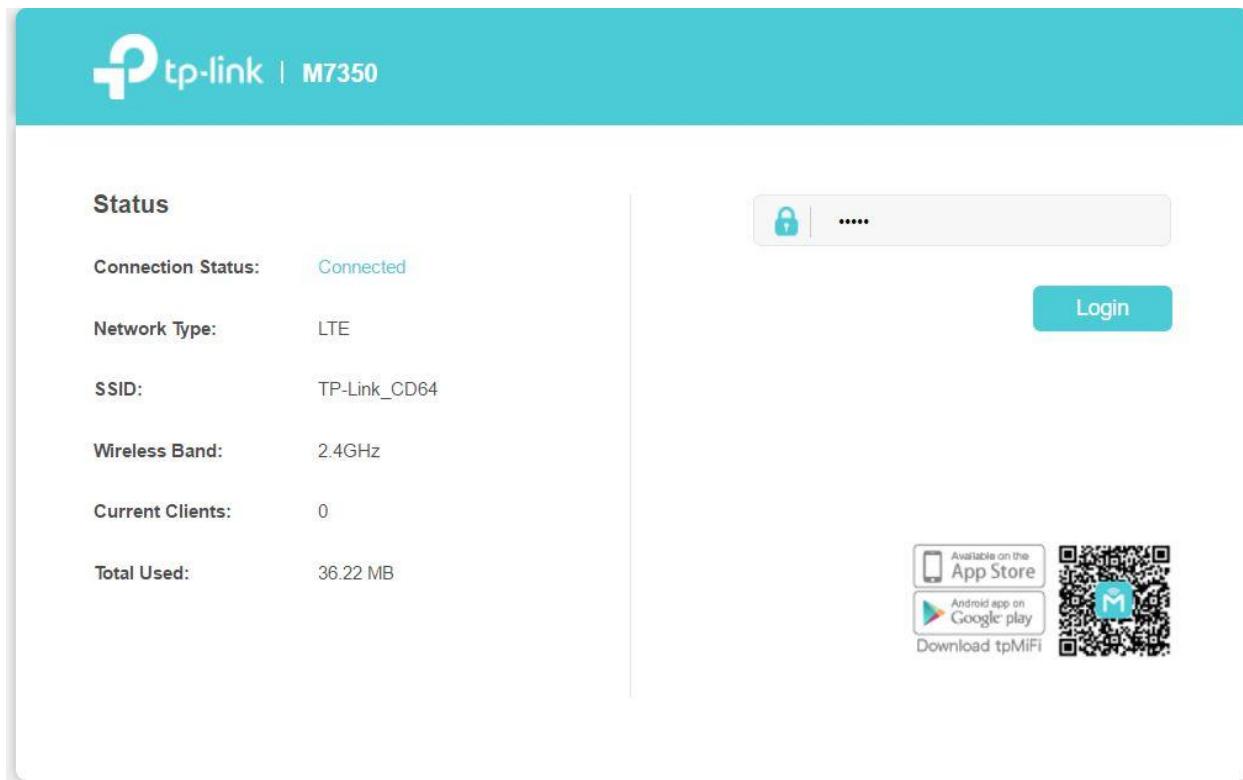
Step 2

Please connect your computer to MiFi wirelessly or via USB cable (about how to access the MiFi's Internet via USB cable, please refer to [FAQ 758](#)), then open the web browser and type the IP address of your M7350 (default is **192.168.0.1** or **http://tplinkmifi.net**) in the address bar. After that, please press Enter.



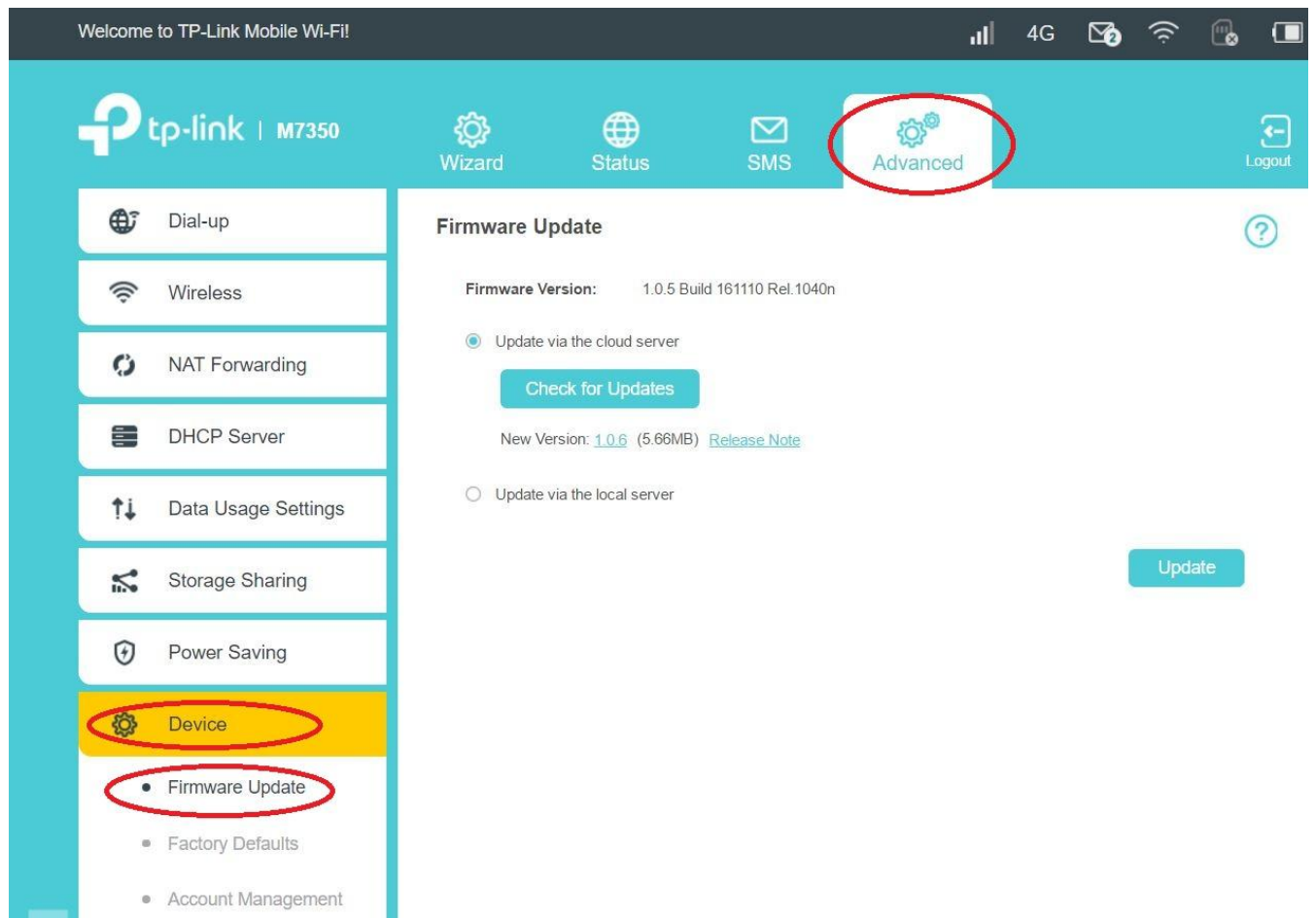
Step 3

Type the password in the login page (default password is **admin**), and log into the management webpage of your MiFi.



Step 4

Select **Advanced—>Device—>Firmware Update**, and the webpage will show like below:



Step 5

Select **"Update via the local server"**, and click **Browse**.

Firmware Update

Firmware Version: 1.0.8 Build 140924 Rel.1005n

☐ Update via the cloud server

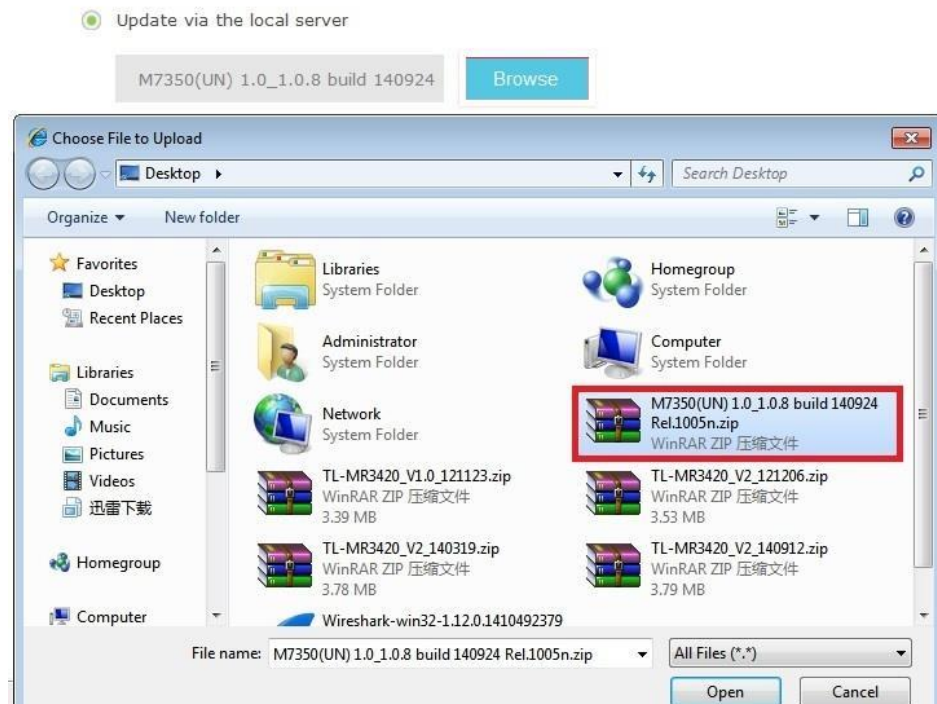
☒ Update via the local server

Browse

Update

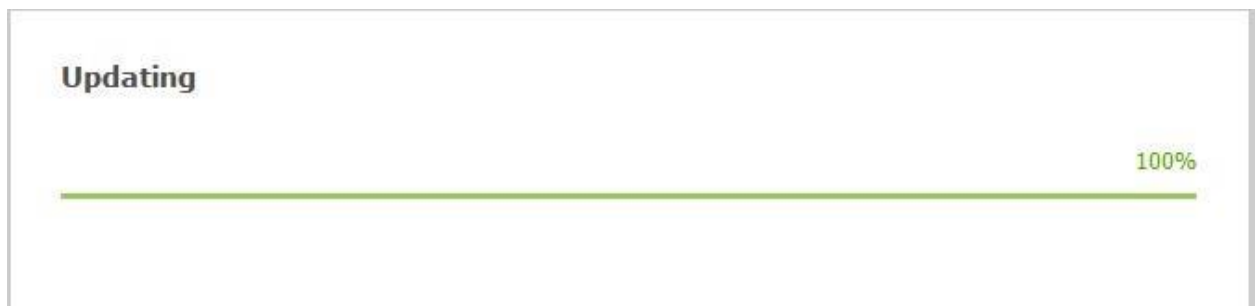
Step 6

Select the zipped firmware file of MiFi you have just downloaded from TP-LINK website on your computer, and click **OK**.



Step 7

Click **Upgrade** button to update your MiFi's firmware, please wait for a few minutes until upgrading process is completed, and MiFi will reboot automatically.



Method 2: Cloud upgrading

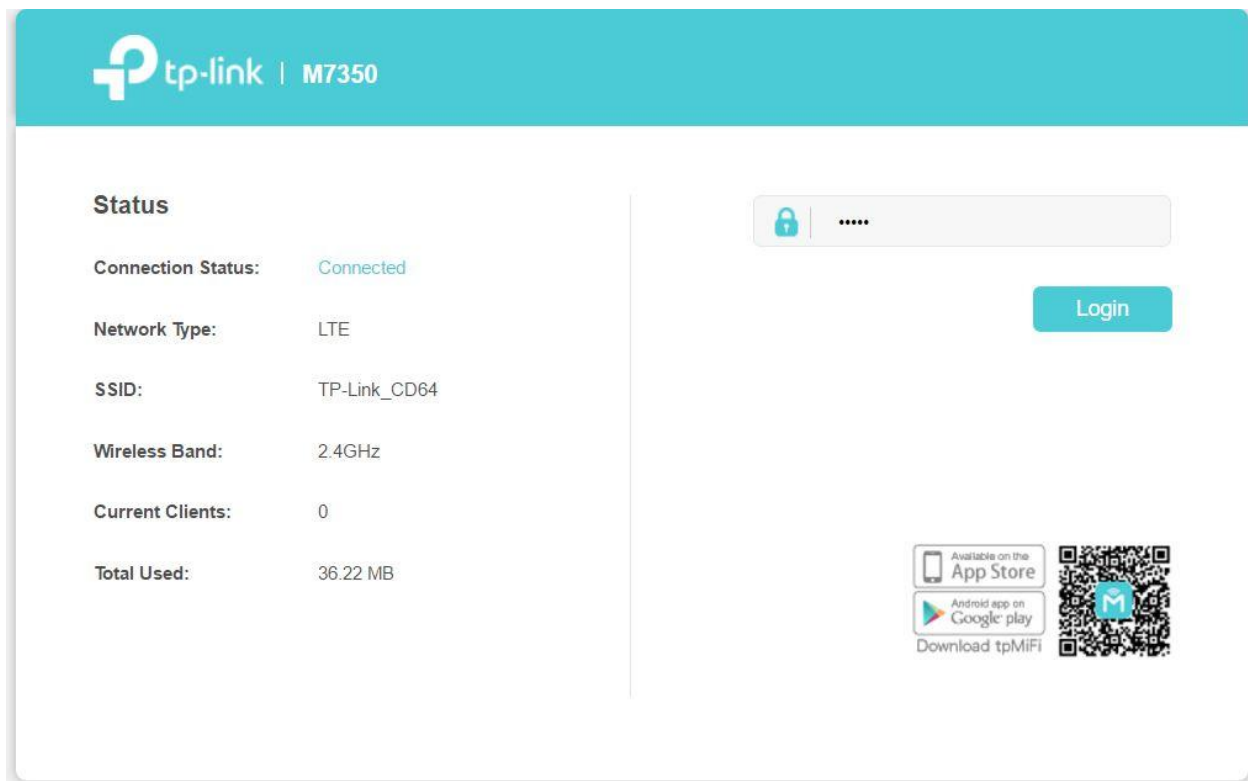
Step 1

Please connect your computer to MiFi wirelessly or via USB cable (about how to access the MiFi's Internet via USB cable, please refer to [FAQ 758](#)), then open the web browser and type the IP address of your MiFi (default is **192.168.0.1** or **http://tplinkmifi.net**) into the address bar. After that, please press Enter.



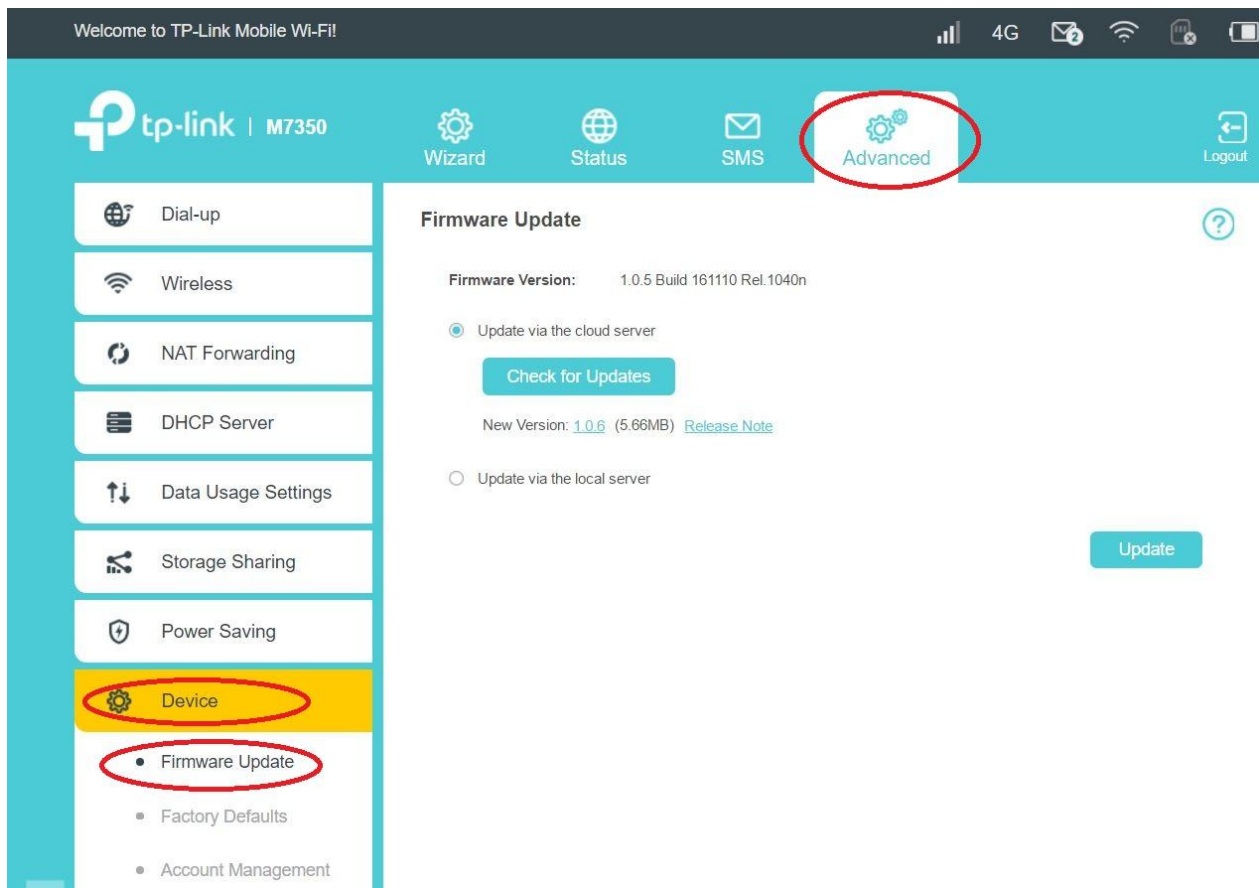
Step 2

Type the password in the login page (default password is **admin**), and log into the management webpage of your MiFi.



Step 3

Select **Advanced—>Device—>Firmware Update**, and the webpage will show like below:



Step 4

Select **"Update via the cloud server"**.

1. If this is your MiFi's first boot in a week, you can see the latest firmware version message directly.

Firmware Update



Firmware Version: 1.0.10 Build 141015 Rel.1009n

☒ Update via the cloud server

Check for Updates

New Version: [1.0.11](#) (2.12MB) [Release Note](#)

☐ Update via the local server

Update

2. If there isn't the latest firmware version message, please click **Check for Updates**.

Firmware Update



Firmware Version: 1.0.8 Build 140924 Rel.1005n

☒ Update via the cloud server

Check for Updates

☐ Update via the local server

Update

Note: Please ensure that your device can access the Internet at this time.

If your MiFi's firmware is already the latest, there will be following indication message "**Your current firmware is up to date**". If not, you can find the latest firmware version message, it will show under the "**Check for Updates**" button.

☒ Update via the cloud server

Check for Updates

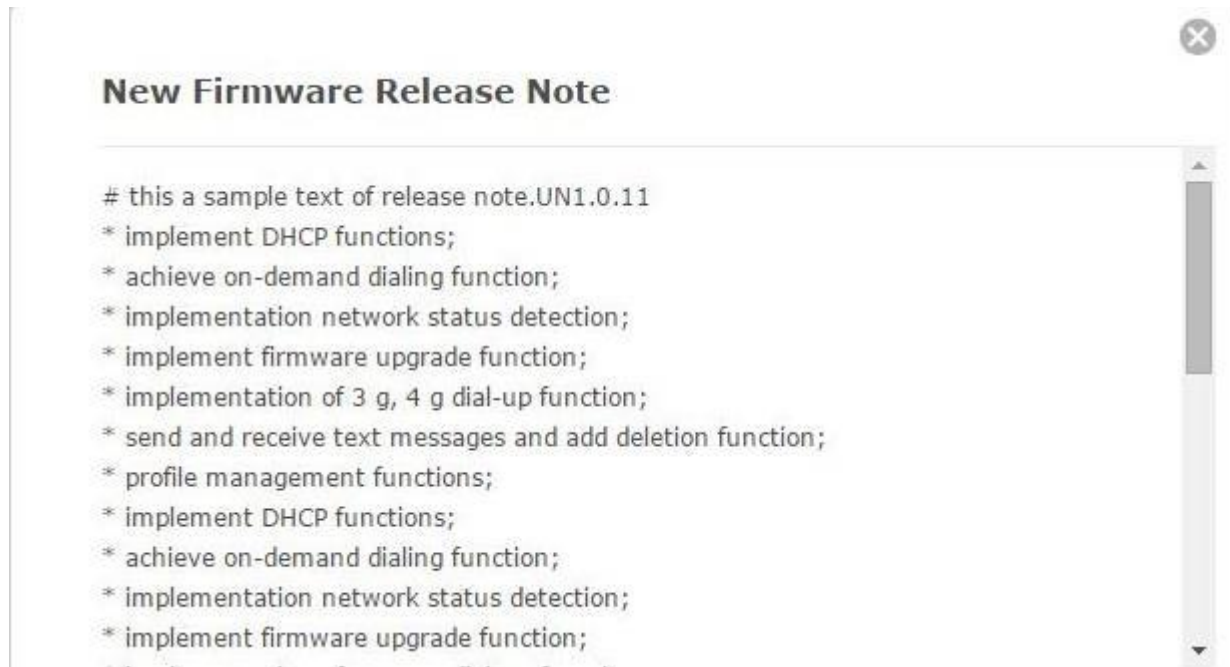
Your current firmware is up to date.

Step 5

Move your mouse to the New Version and click it, it will download the latest firmware package, then you can choose local upgrading. **(Optional)**



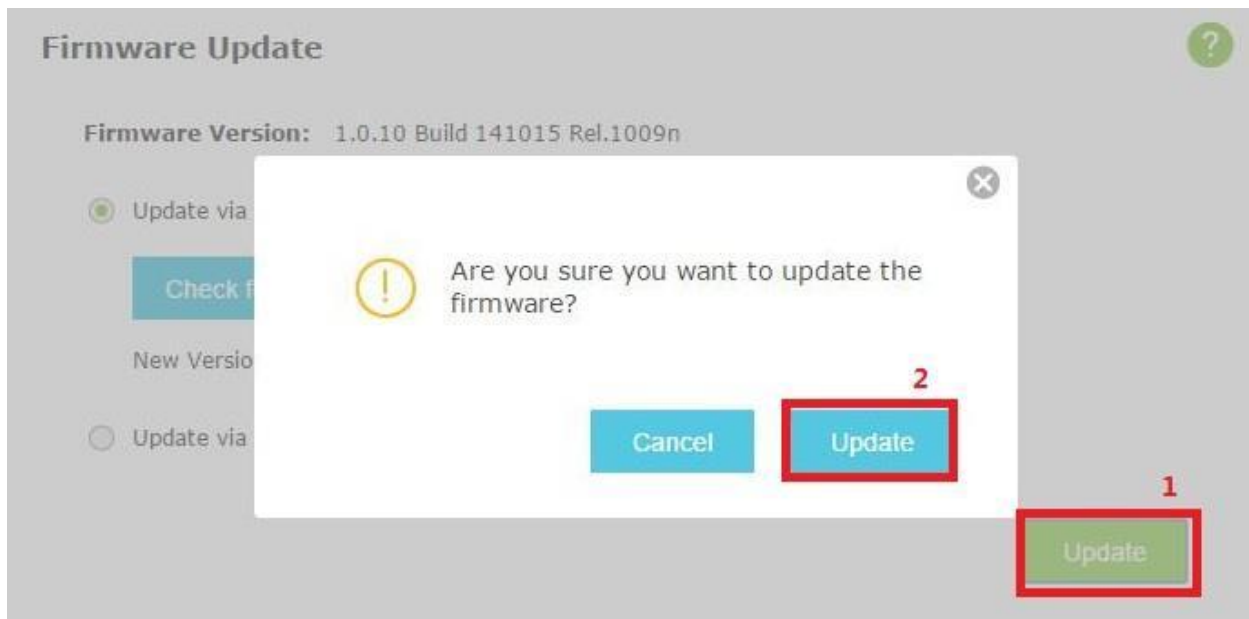
Move your mouse to the Release Note and click it, you can see all the release notes in this firmware.



Note: Here is just a sample of Release note.

Step 6

Click **Upgrade** button to update your MiFi's firmware.

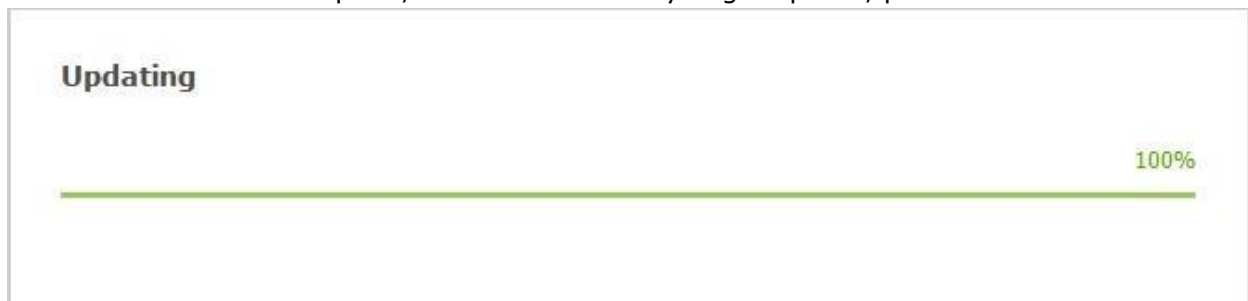


It will download the latest firmware from the cloud server firstly.

Note: You can pause download anytime, when you update it again, it will remember your download history and continue to download from the historical record.



When the download is complete, it will automatically begin update, please wait for a few minutes



until upgrading process is completed, and MiFi will reboot automatically.